



Exhaust fan GF12-24"

Stay cool with topcool



Name: Exhaust fan GF12-24 direct drive fans

Size: 12-14-16-18-20-24"

Detail product:

Topcool composite fiber exhaust fan provide energy efficient and cost-effective way for exhausting air from divers application.

Optimum application:

12"to 24" composite fiber exhaust fan is the optimum solution for livestock and poultry application. This fan offers superior performance and good efficiency. Mostly use for minimum and intermediate ventilation.

Other environment:

Ideal for ventilation small room and 3 seasons ventilation. In dairy, poultry, swine, greenhouse and industrial.

Topcool features:

Housing:

- 1.Made with reinforcement fiber composite high density, durable, sturdy, and corrosion free
- 2.Thicker layer of U.V. protection on composite surface
- 3.Extra layer of resin inside give smooth surface for easy maintenance and cleaning
- 4.Air flow design maximize the efficiency
- 5.Slanted design projects away moisture from outside barn.
- 6.Condensation flows down outside keeping walls clean and dry in the wet season.
- 7.Inside mounting is flush, eliminating obstruction along walkways.
- 8.Aerodynamic housing tunnel and cone encourages free air flow

Propeller:

- 1.Blade are made with nylon fiber reinforcement.

- 2.Cast aluminium hub support 6 nylon blade

- 3.Propeller pitch and motor are closely matched to provide maximum air flow output and best efficiency

Motor:

- 1.Standard motors are totally enclosed, high efficiency
- 2.All motors are designed and rated for years of trouble free operation.
- 3.Quiet operation on all range of speed

Support and frame:

- 1.Built in central T beam steel support, fix inside housing on each side and bottom this design provides a strong support that aligns the propeller centered in the orifice for maximum performance.
- 2.Stainless steel hardware #304.

Guard:

- 1.heavy gauge Zinc galvanized wire and power coating finishing prevent

corrosion

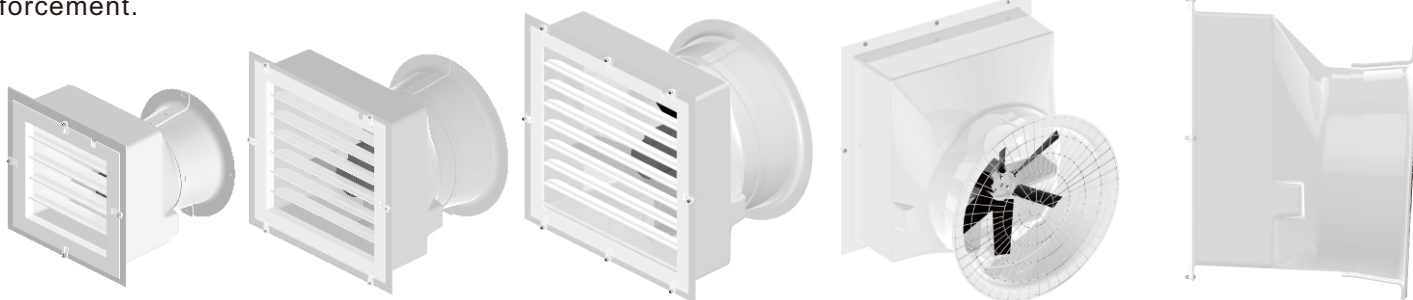
Shutter:

- 1.Design to lowers air flow resistance with preventing back drafts.

- 2.Easy to remove intake shutter with the "Topcool shutter clip" design

Optional accessories:

- 1.Motor 1 phase or 3 phase
- 2.Different configuration motor form 1/10HP to 1HP
- 3.NEMA or IEC
- 4.OSHA safety guard
- 5.Thermally protection
- 6.Winter board inserts (replace the shutter during winter, if the fan are not required to operate)
- 7.Long cone
- 8.No cone /guard fix on housing tunnel
- 9.Aluminum Shutter
- 10.Wire guard intake (no shutter)
- 11.Other configuration available on



CopyRight ©2016. Topcool Ventilation Equipment Co. , Ltd.All Rights Reserved



TOPCOOL VENTILATION EQUIPMENT CO.,LTD.

Tel : 0086-757-88861830 website : www.topcool.co

Fax : 0086-757-88861828 E-mail : info@topcool.co



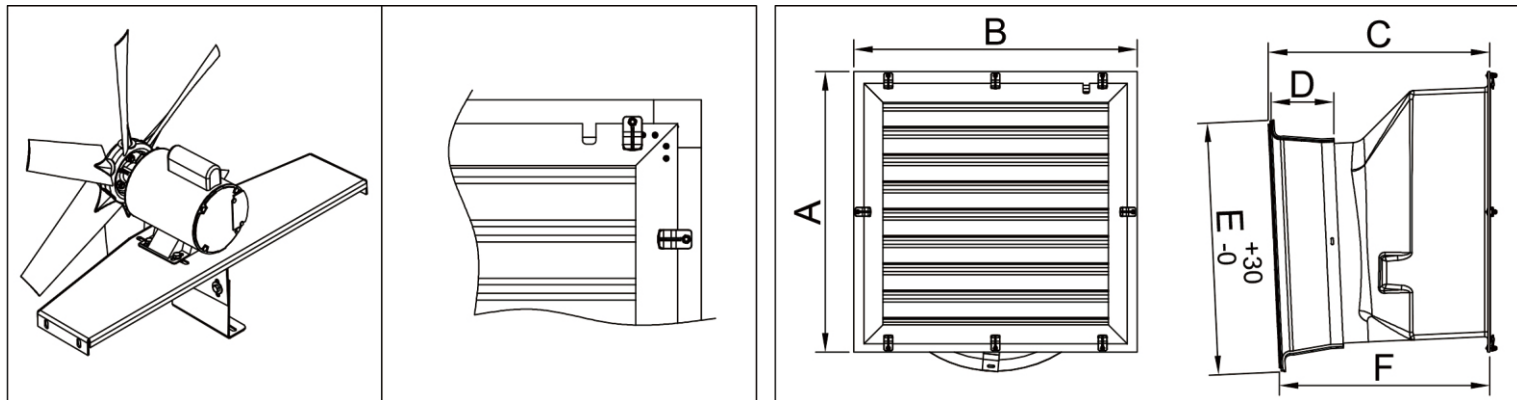


Exhaust fan GF12-24"

Stay cool with topcool

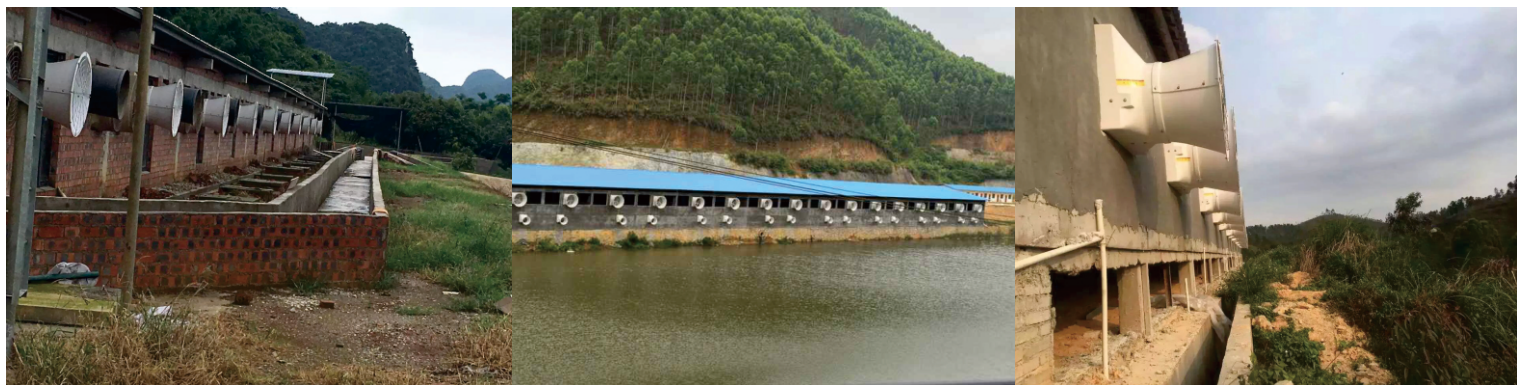


FEATURE POINTS



Product Model	Size (mm)						Product Model	Size (mm)					
	A	B	C	D	E	F		A	B	C	D	E	F
GF12"	588	599	707	200	Ø486	686	GF18"	740	751	700	200	Ø638	671
GF14"	639	650	695	200	Ø537	671	GF20"	791	802	698	200	Ø689	668
GF16"	689	700	697	200	Ø588	671	GF24"	889	900	703	200	Ø797	668

PICTURE APPLICATION



*Picture for reference only.

CONFIGURATIONS & PERFORMANCE DATA

topcool parts no:	Nominal size	Power (kw)	Volts	AMPS	Hz	motor Spd	kW input	RPM	CFM (0" SP)	CFM/W (0.05" SP)	CFM (0.08" SP)	CFM/W (0.08" SP)	CFM (0.12" SP)	CFM/W (0.12" SP)	CFM (0.20" SP)	CFM/W (0.20" SP)	AFR (0.20"/0.05")	Drive	Blade	Test ref #		
81-0768-0	24"	0.37	220	2.4	50	1500		1408	6353	15.8	6176	12.8	5941	12.1	5765	11.5	5412	10.4	88%	6/BD	Alu	cau 20150524 GF24

*Other configuration are available.

*For complete description and detail call now

*Air Flow Ratio (AFR) here is calculated by dividing the CFM at .20 static pressure by the CFM at .05 static pressure.

The products show in this brochure are covered by a limited warranty.

Due to our continual effort to provide better products and service; literature, products, performance data, prices and availability are subject to change without notice.

Additional information is available at www.topcool.co

CopyRight © 2016 .Topcool Ventilation Equipment Co., Ltd . All Rights Reserved



Representative:

Code:
Date: August 2016

